

Portfolio

Timothy Boylan

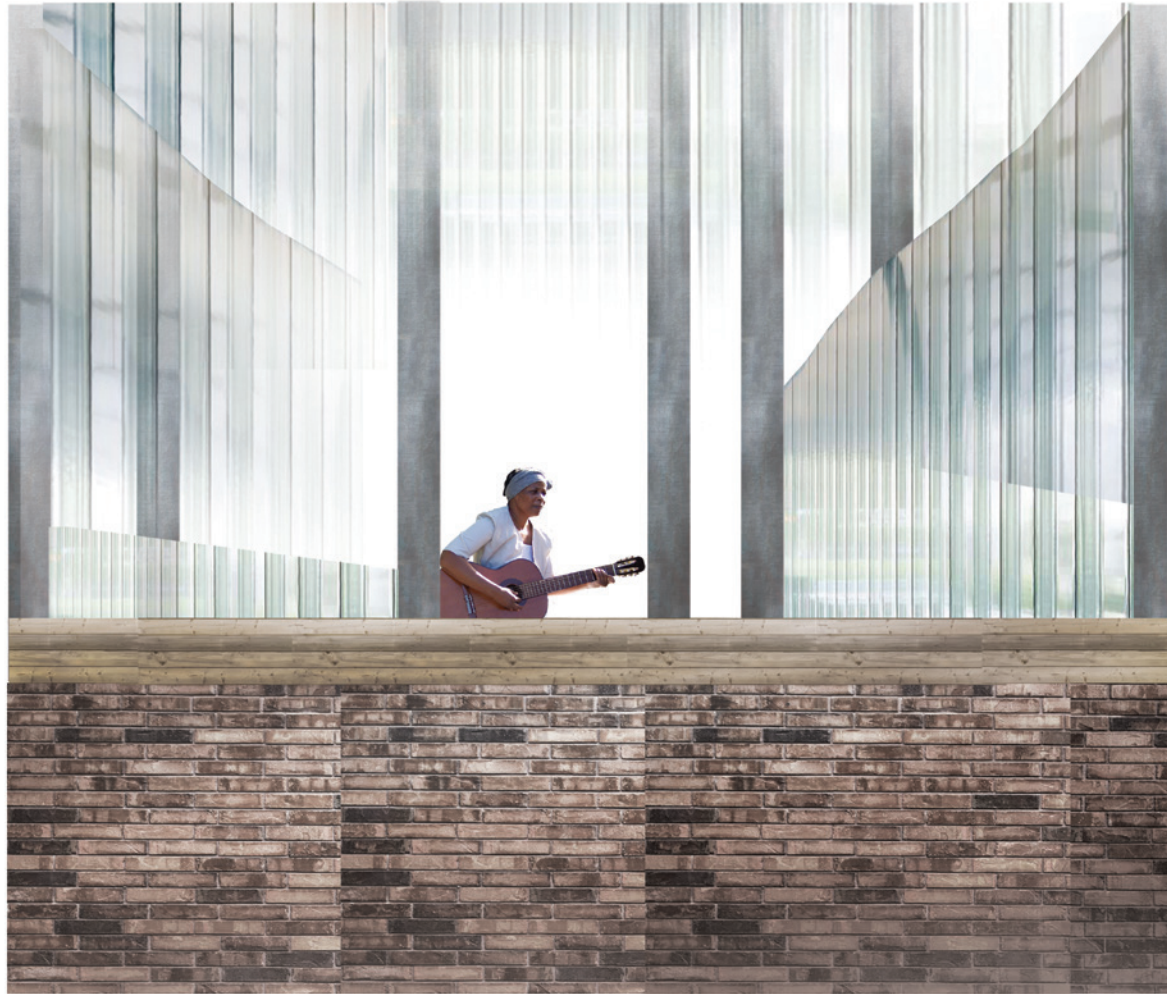
2014 - 2018

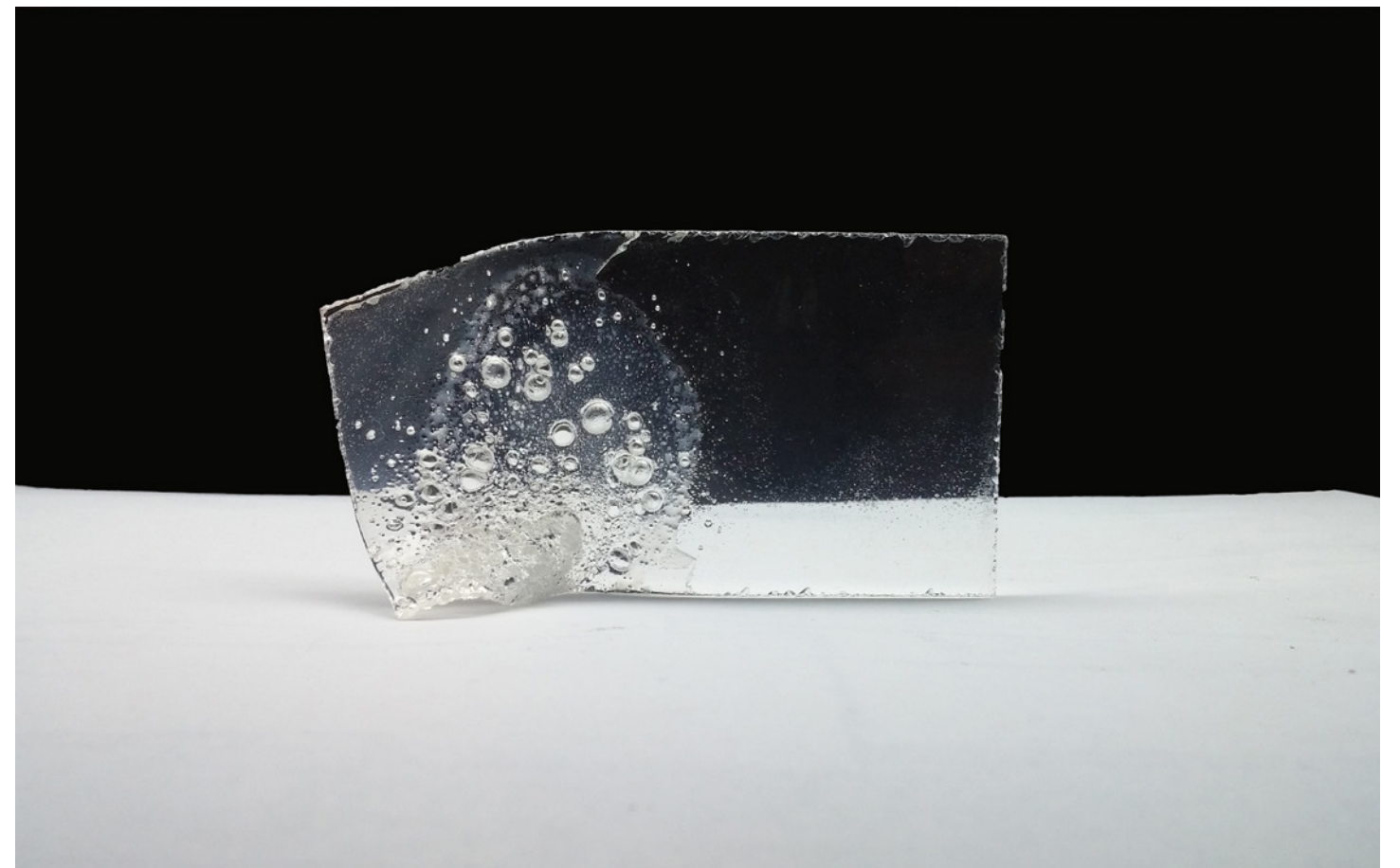
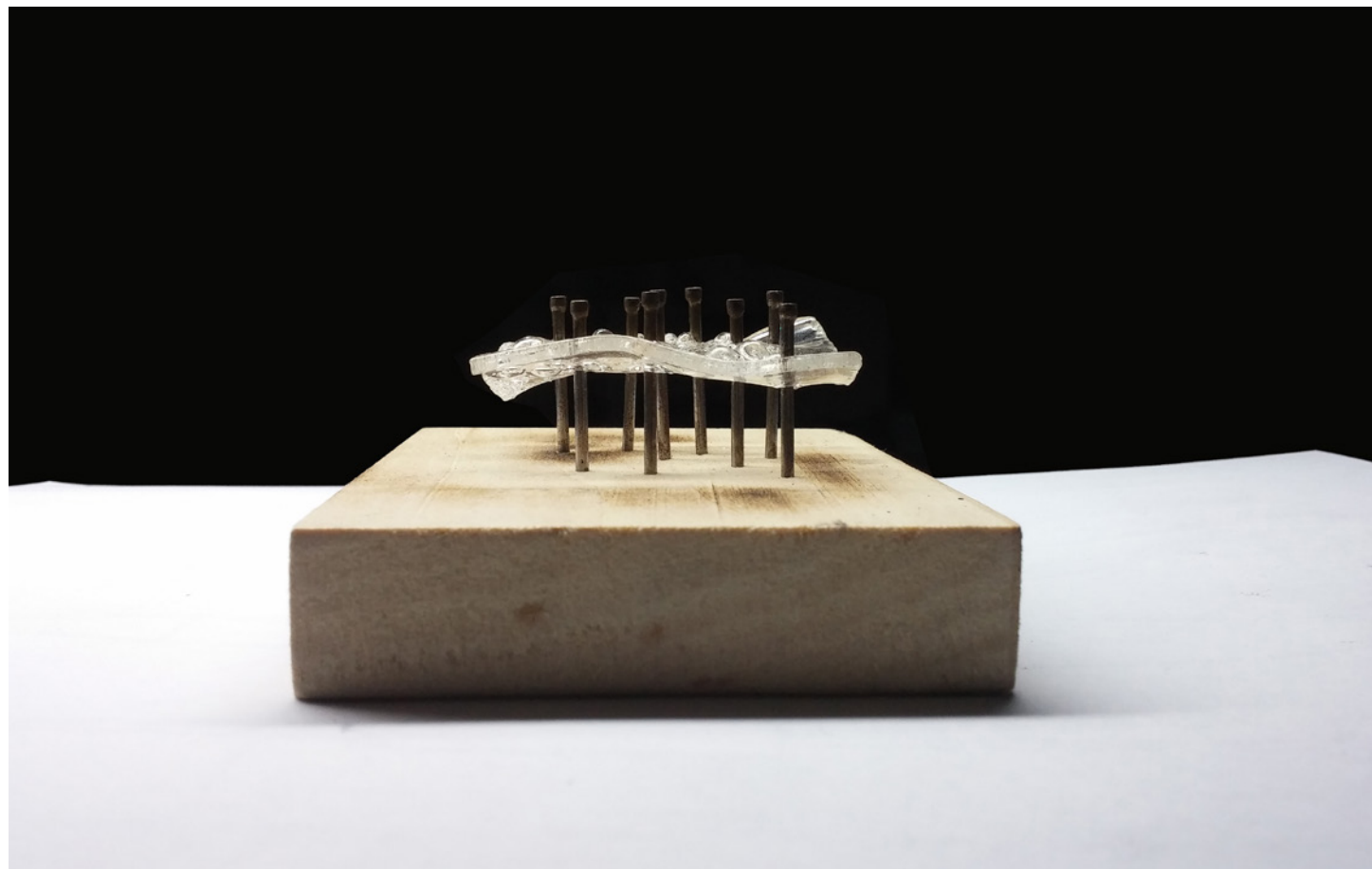
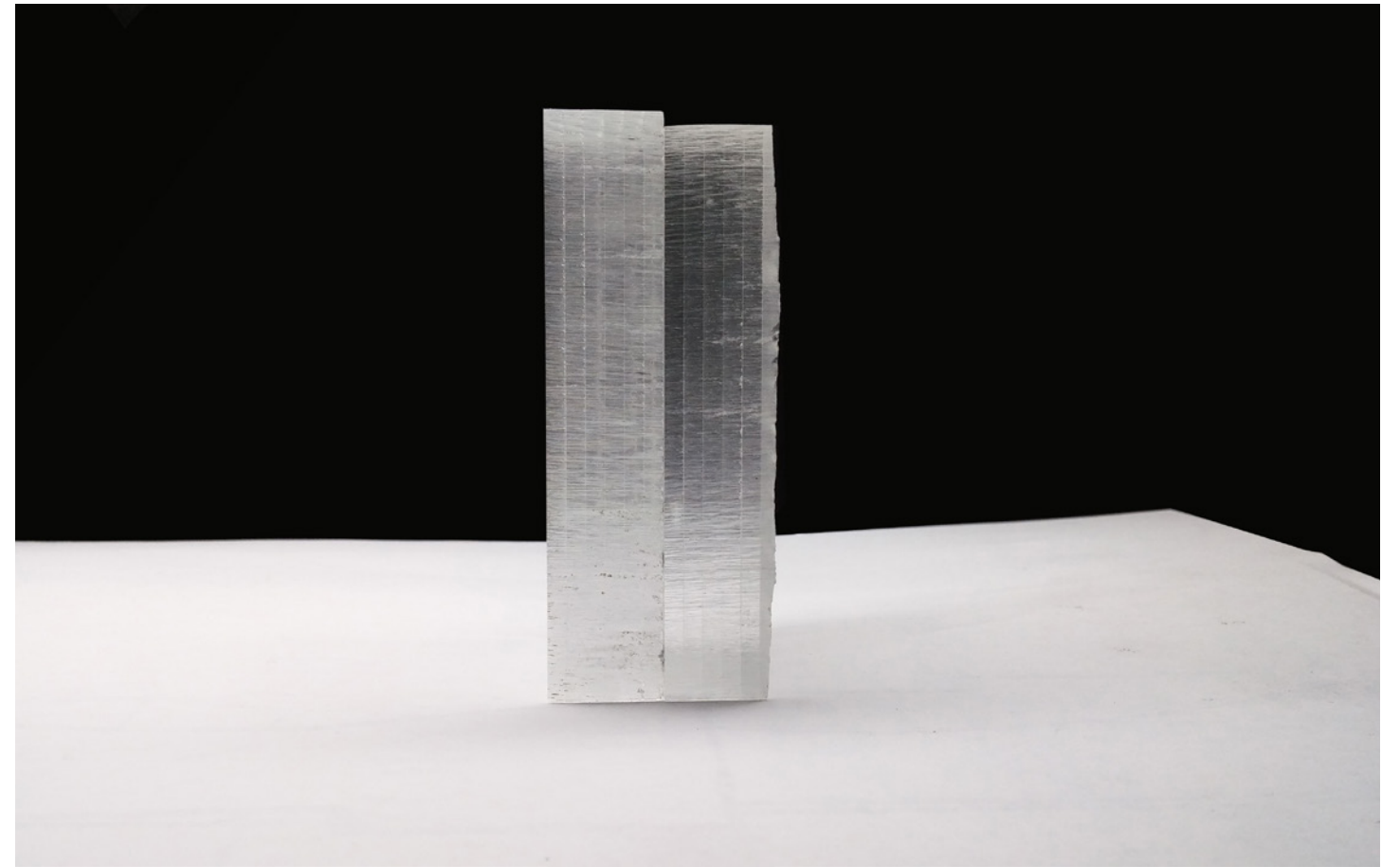
Uptown School of Folk Music

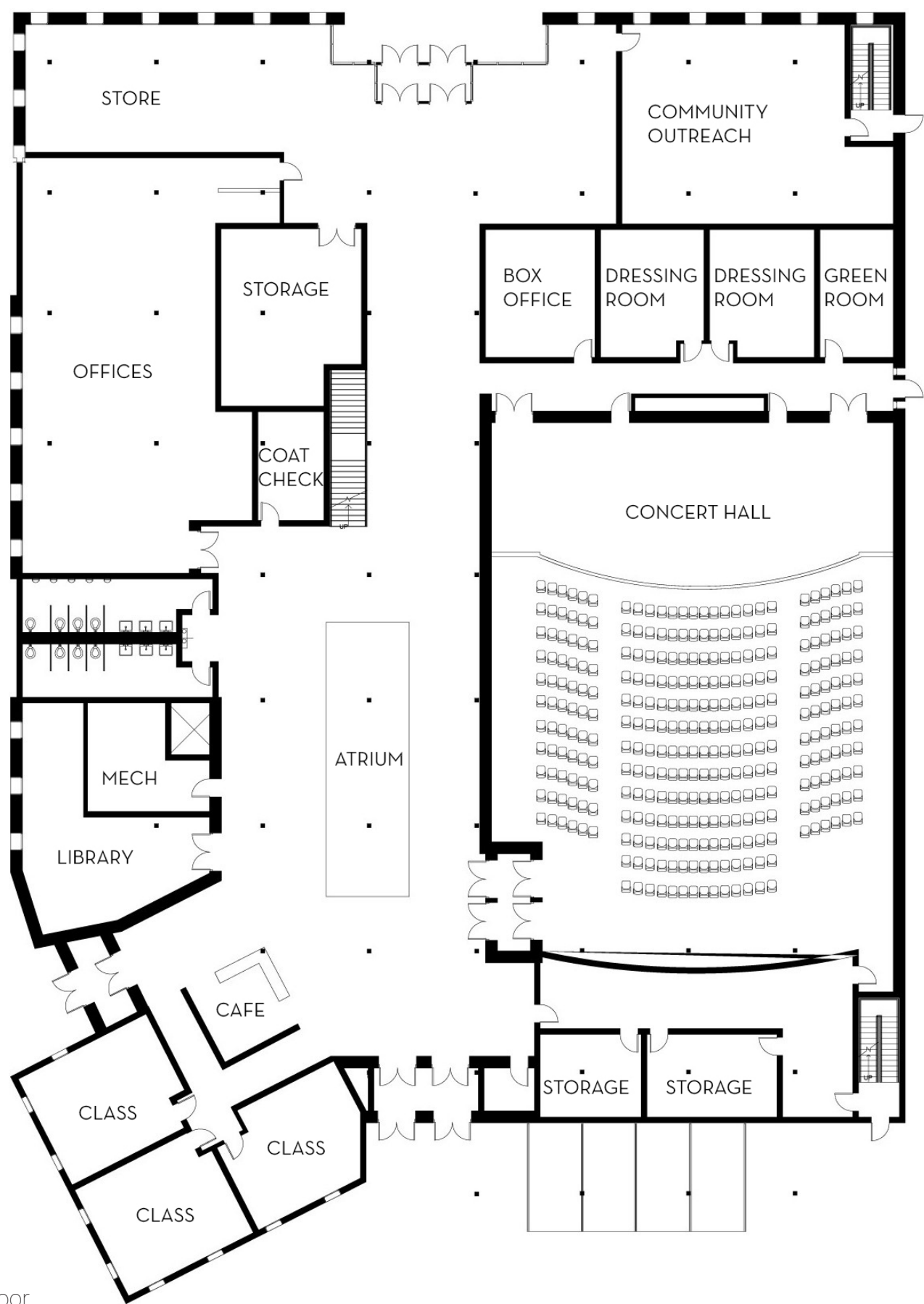
Fall 2017

This semester long project focused on contextual and iterative design. The Old Town School of Folk Music is an existing organization in Chicago. We partnered with them to create a new development in Uptown Chicago. Program consisted of a school, concert hall, and community outreach center.

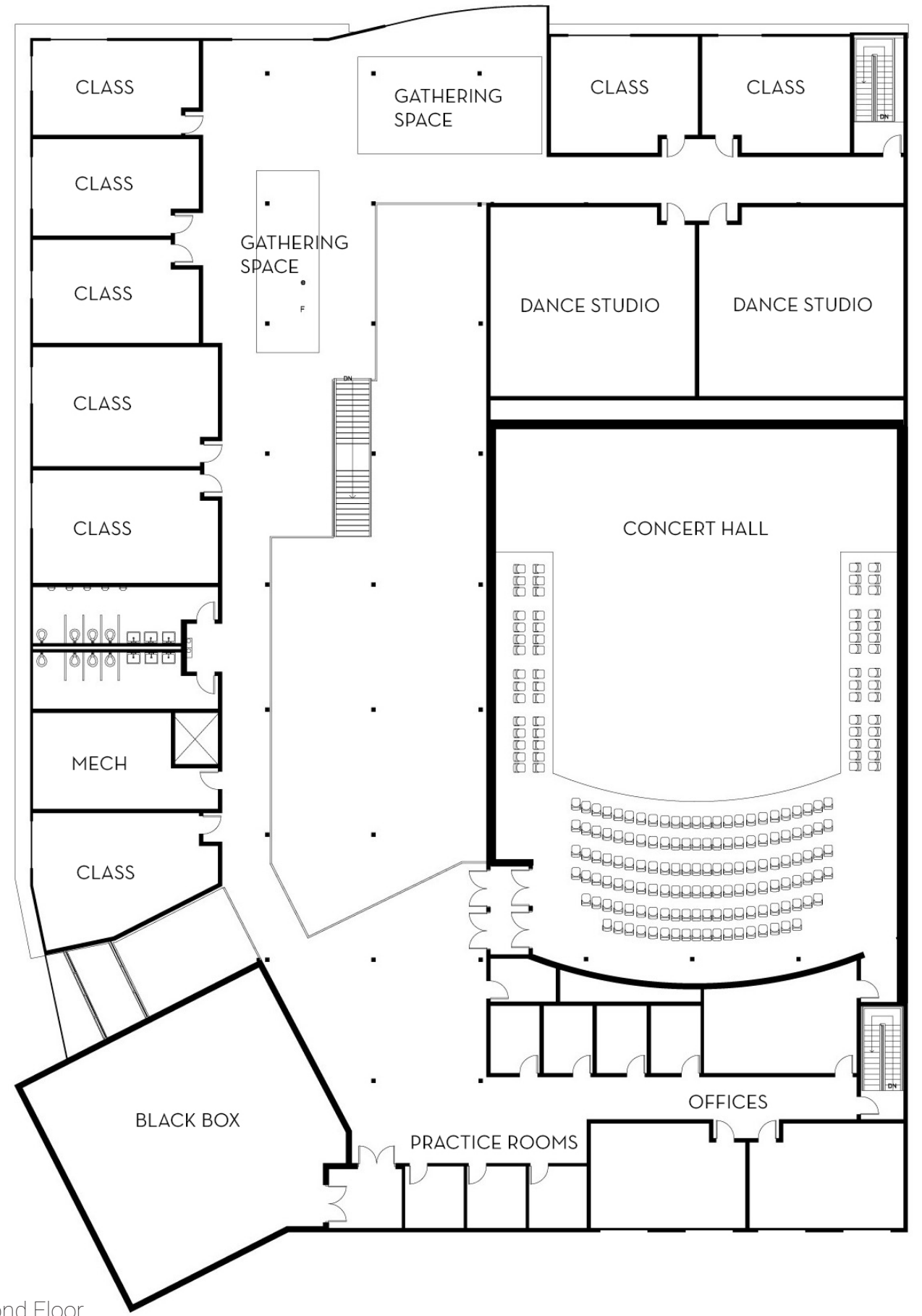
My design focused on creating a foundation for creative expression in Uptown.



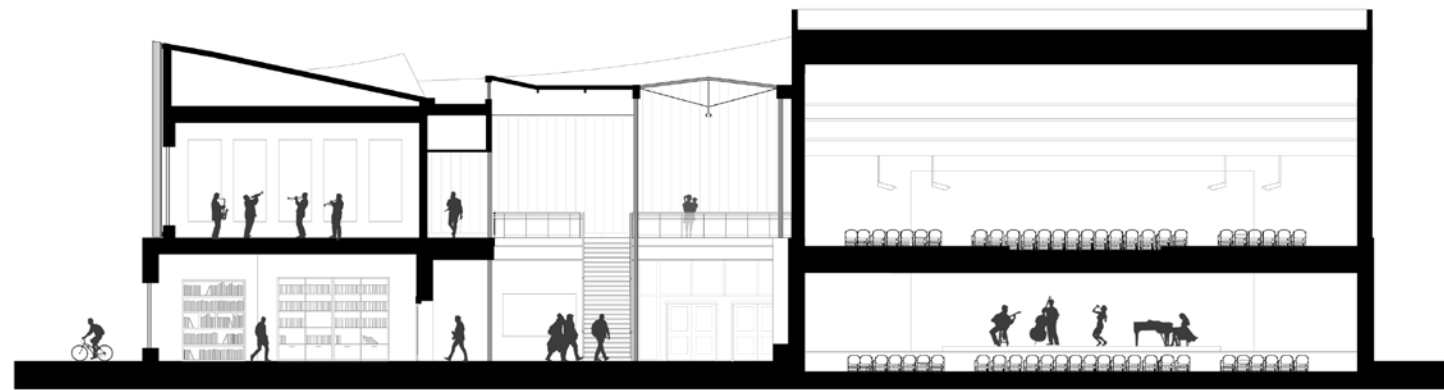
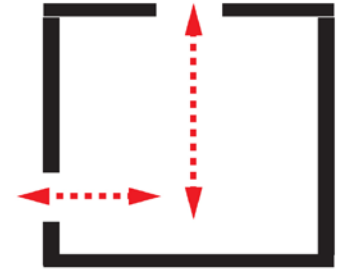
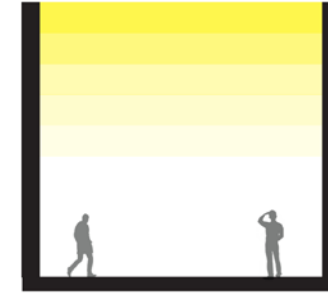
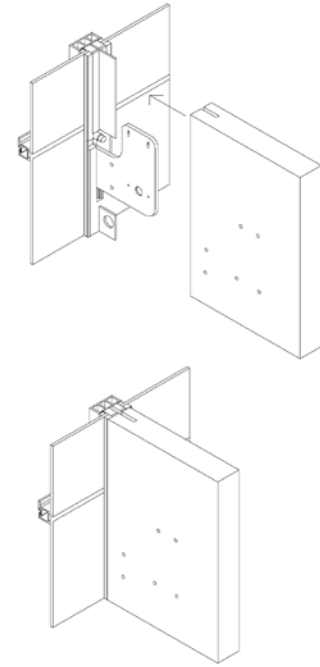
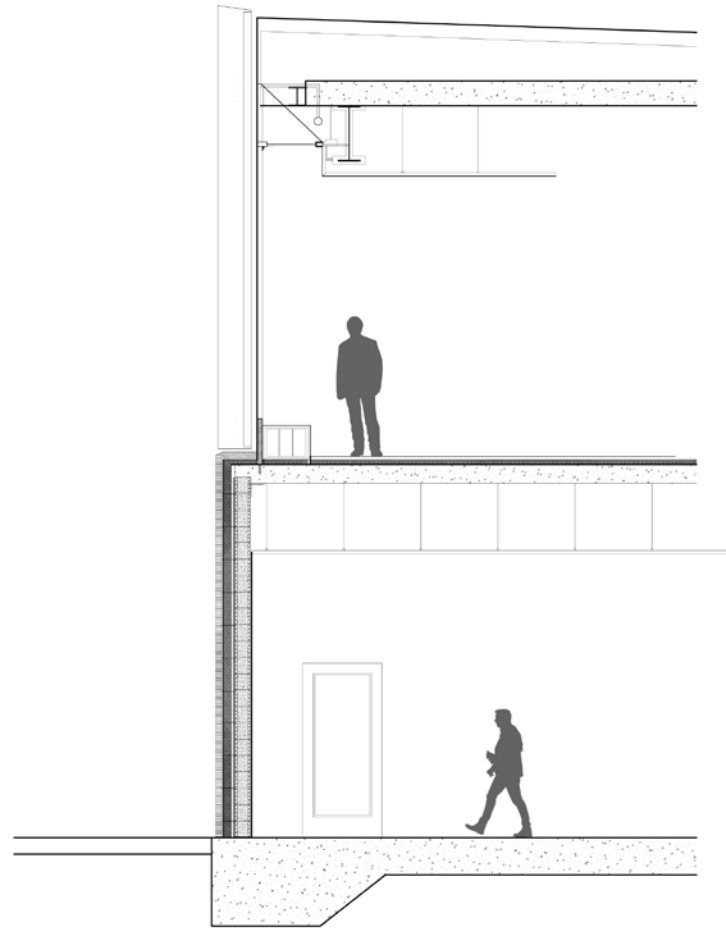




First Floor



Second Floor

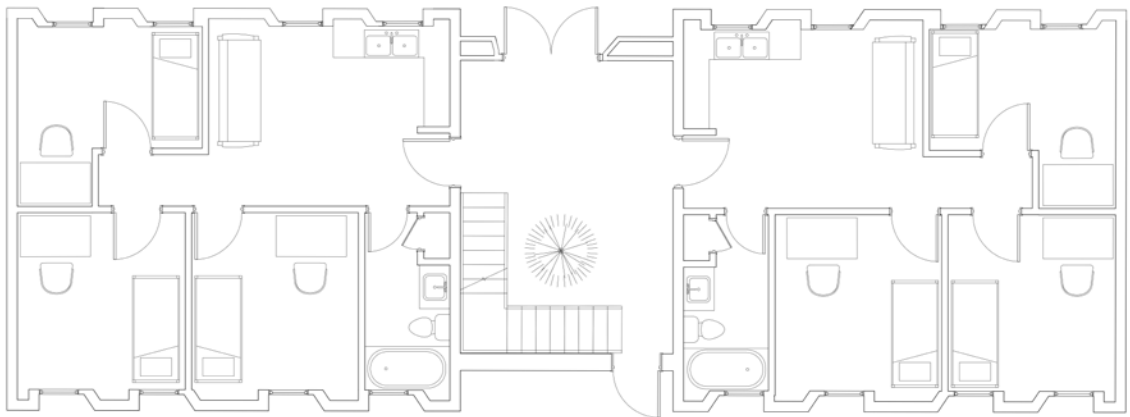
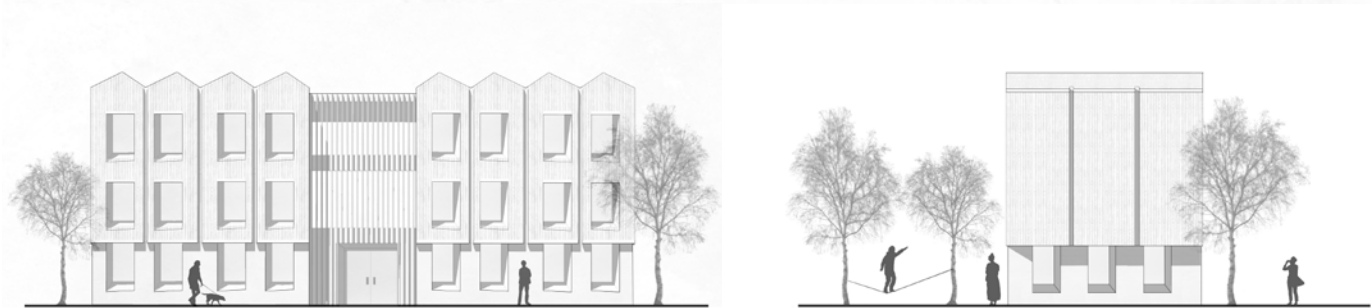




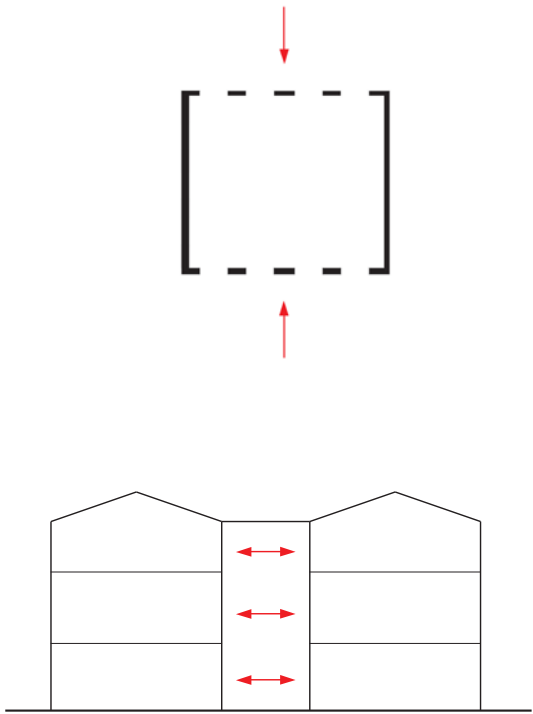
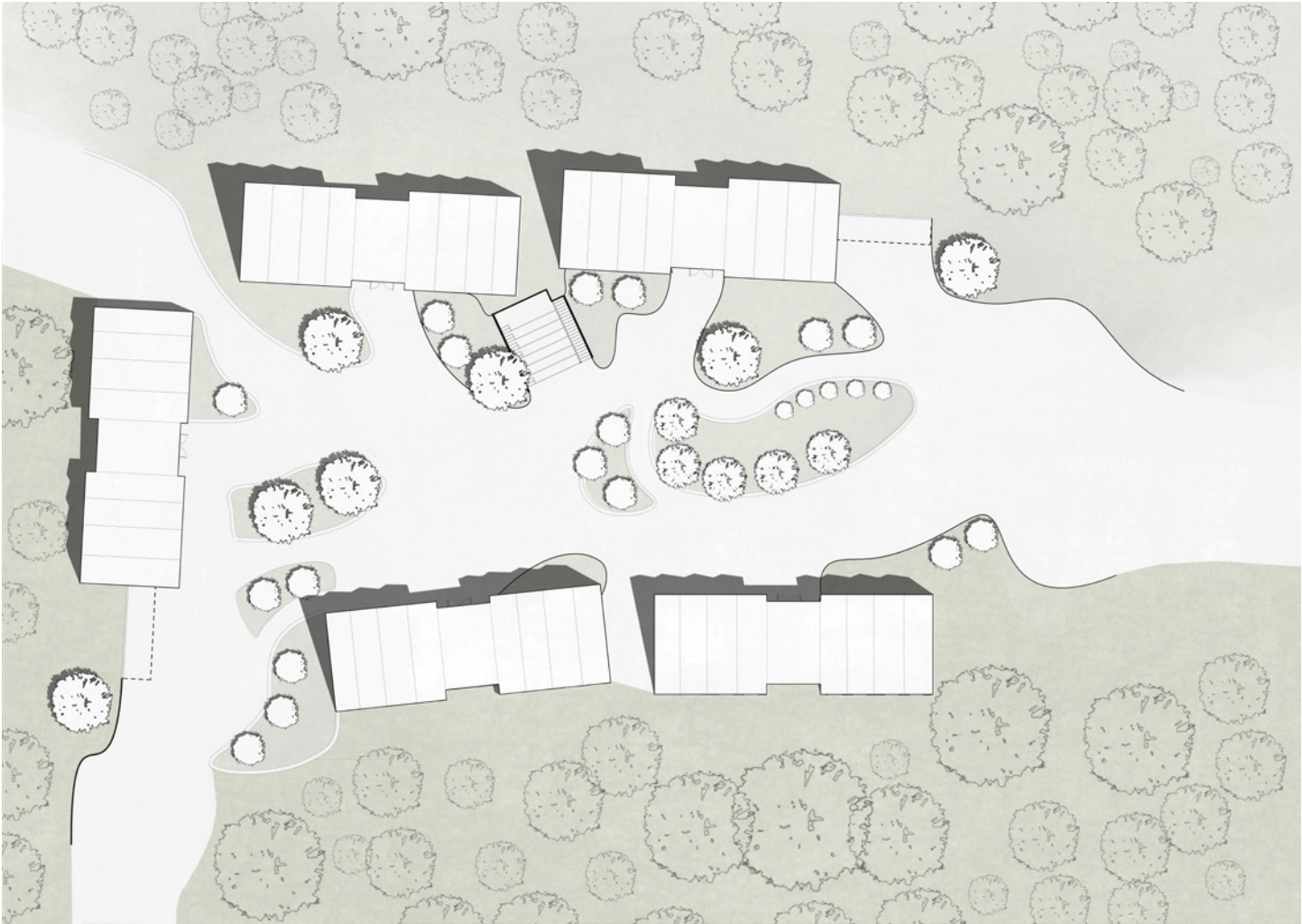
Student Housing Design

Fall 2016

Designed efficiently by stacking units and taking advantage of passive sustainable methods including daylighting and highly insulated wall systems.



FLOOR PLAN

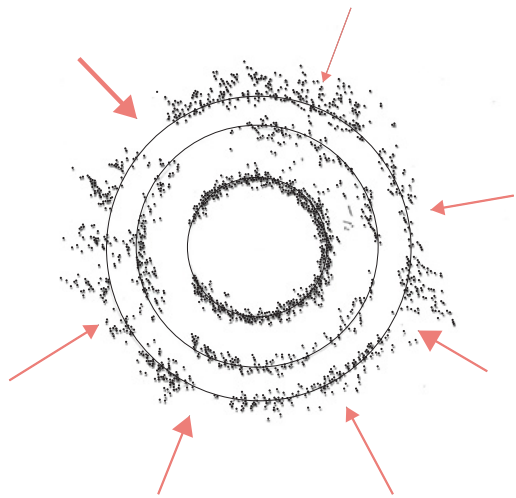




Music Sactuary Pavilion

Fall 2017

One Week pavilion design project. Form is inspired by the physical properties of how sound particles travel in a free frield environment. The pavilion does not consist of any actual walls, rather spaces arWe created between clusters of wood columns. Creating at the center a secluded place where musicians can perform in privacy.WV



Cambodian Genocide Museum

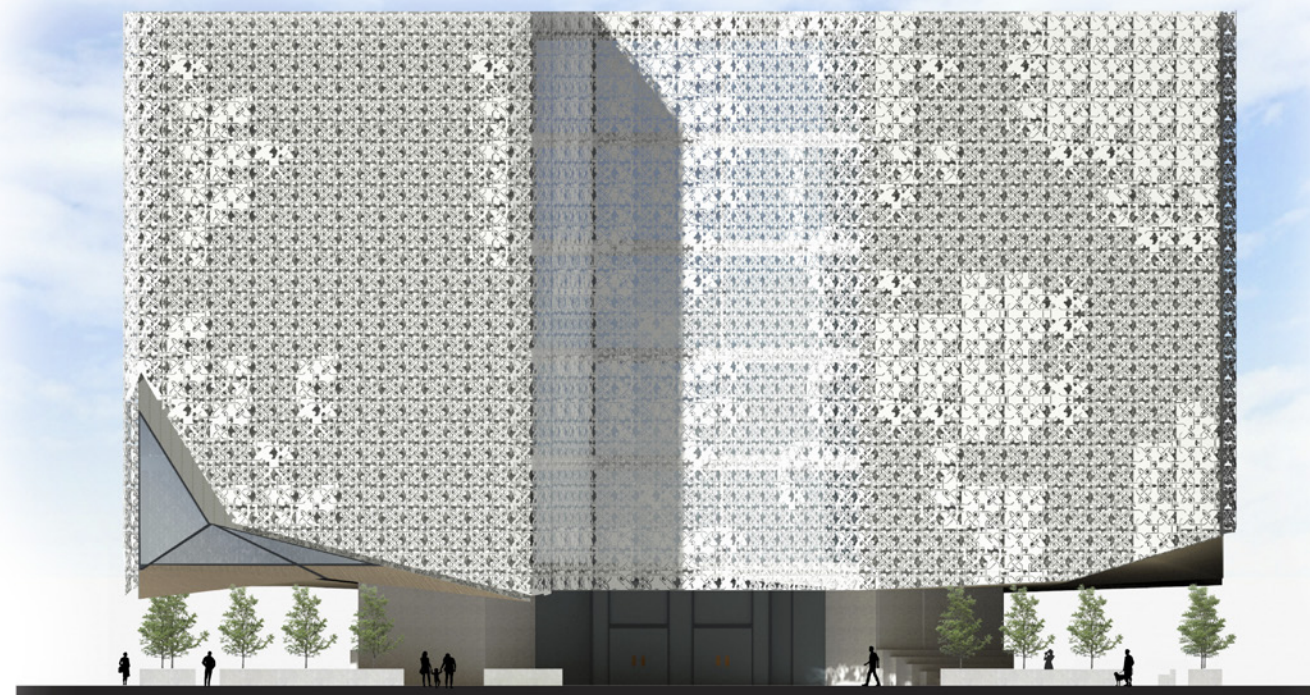
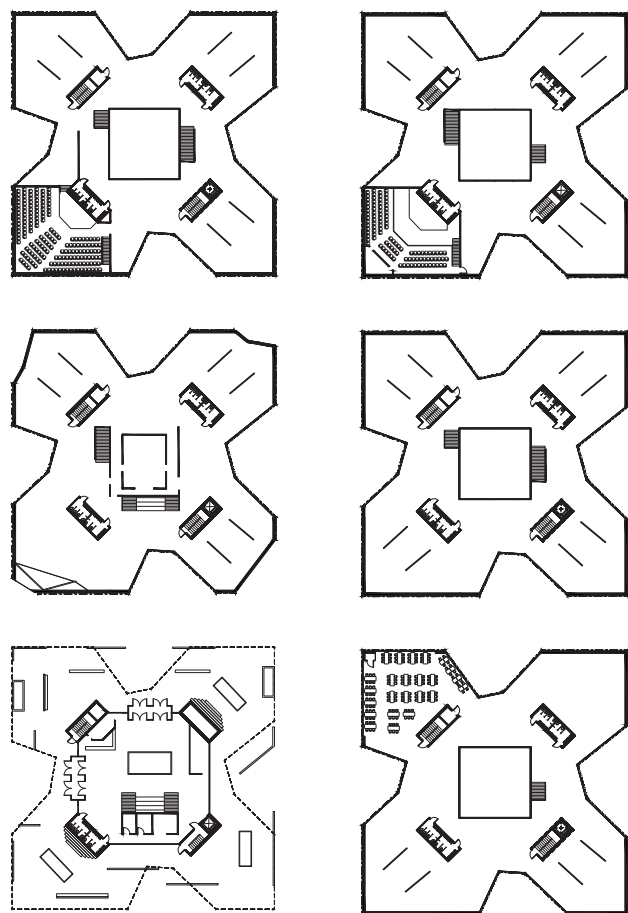
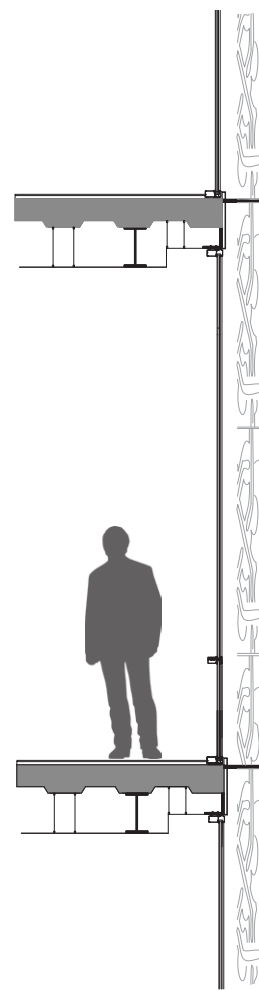
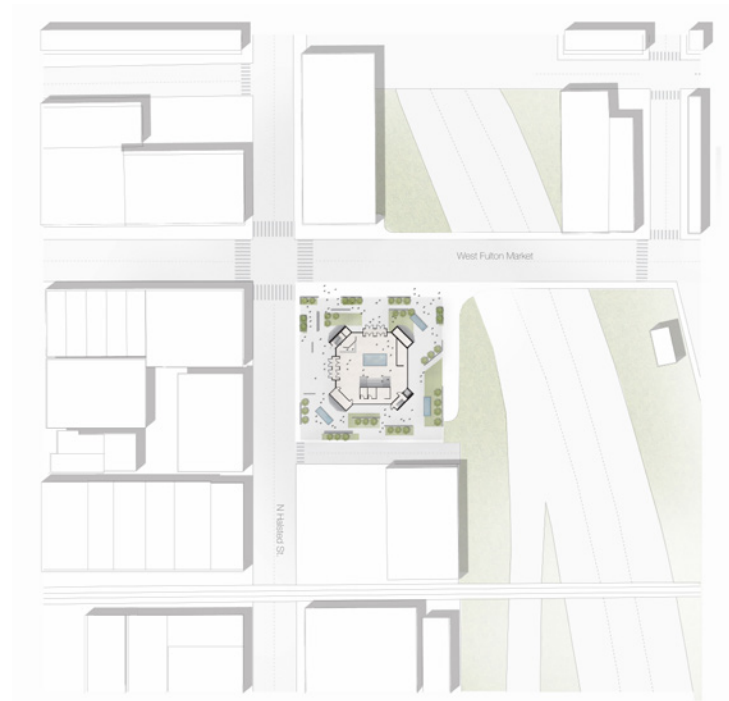
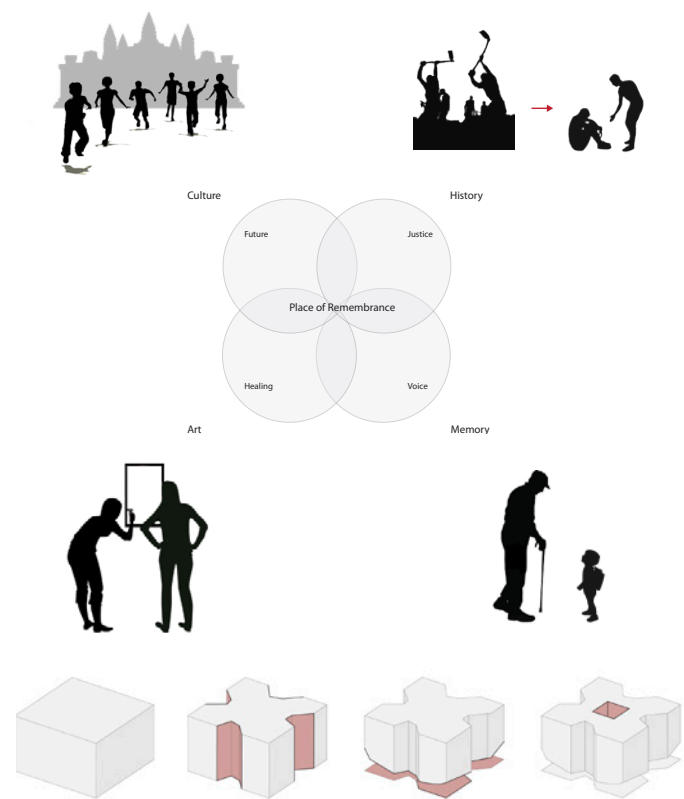
Spring 2017

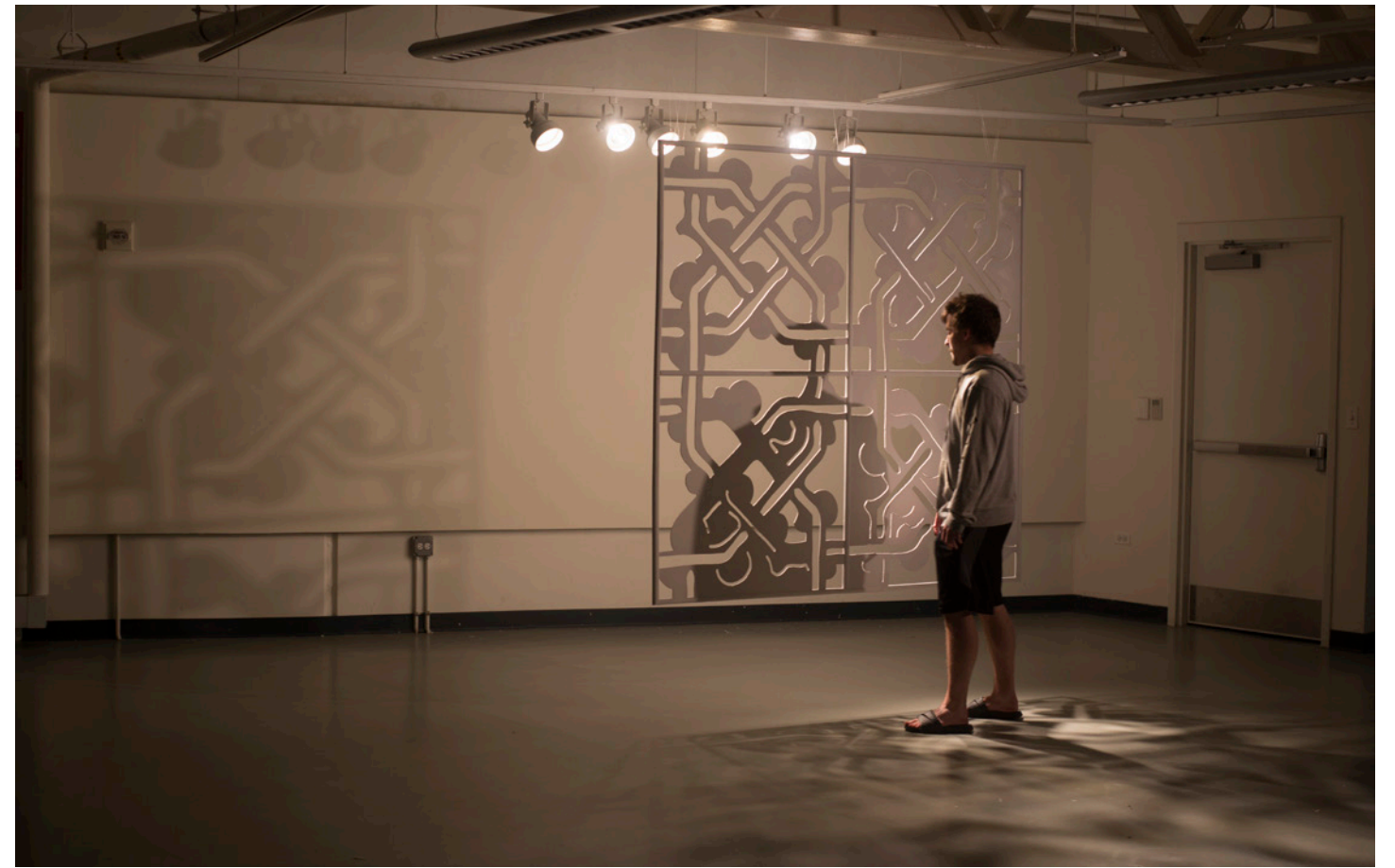
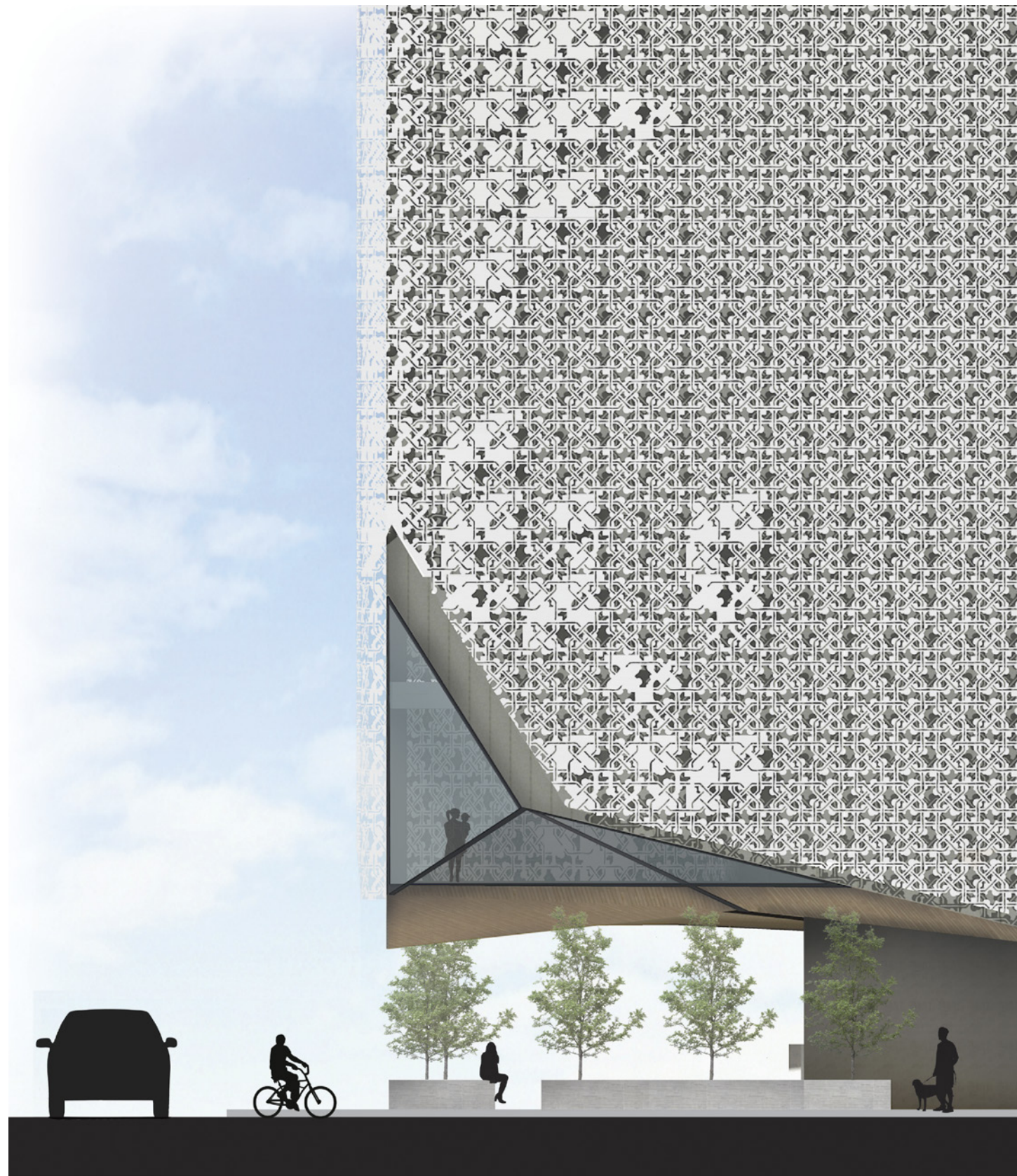
Designed in collaboration with the National Cambodian Heritage Museum and Killing Fields Memorial in Chicago. The project aims to unite diverse generations of Cambodians. Through the use of art, memory, history, and culture. The program combines elements of museum, memorial, cultural center, and research center.

The parametric facade pannel system is inspired by traditional cambodian textiles.

Thanks to Kaoru Watanabe and Paul Chhorm for the assistance with research and development.







Coral Lamp

Fall 2015

Made from steam bent veneer and mounted on walnut, this mood lamp was inspired by Hawaiian coral reefs.



White Oak Table

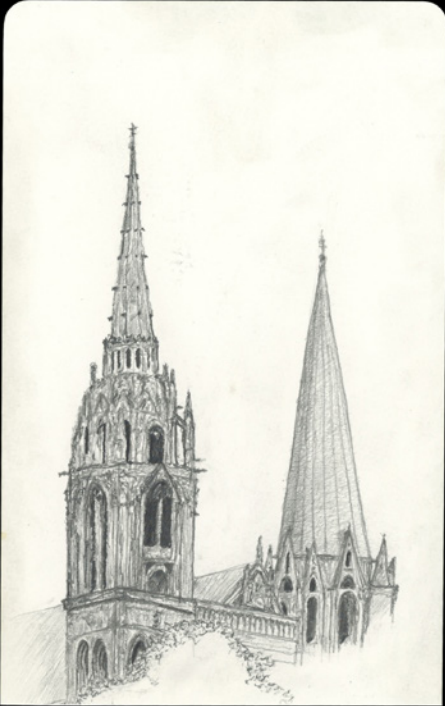
Fall 2014



Urban Sketching

Summer 2017

Sketches include work from a four week tour though Europe. Countries including Greece, Italy, Spain, and France. Major Cities: Athens, Roman, Florence, Barcelona, and Paris.



Tension Cable Stairs

Spring 2016

Structural stair design project. High tension cables keeps the stairs steady and structurally supported.

